

## Laser Diode FVLD-520-1000M (Preliminary)



**FVLD-520-1000M** is a multimode laser diode with 1000mW CW output power at 520nm. It is supplied in a 9mm TO can with Zener Diode. The laser diode is suitable for the use in various opto-electronic applications.

### Absolute Maximum Ratings:

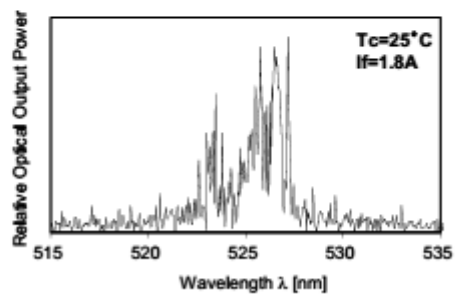
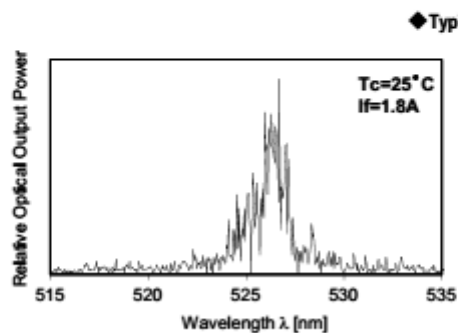
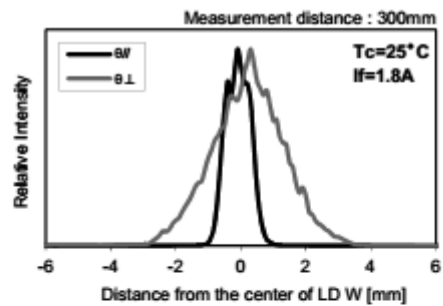
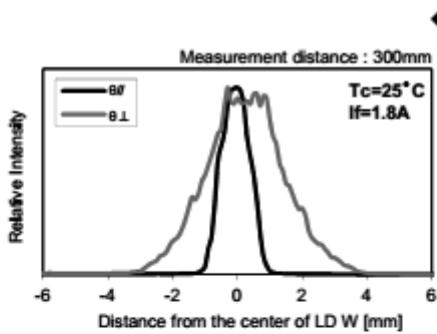
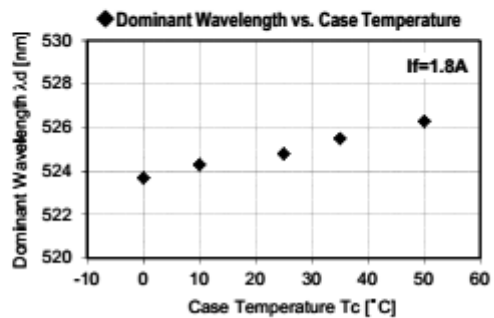
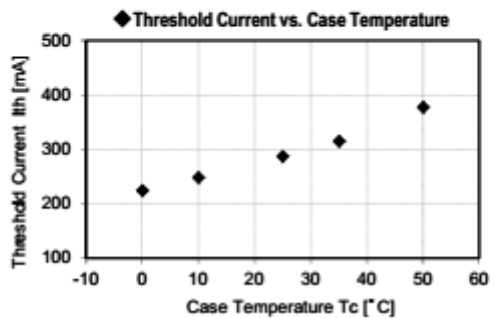
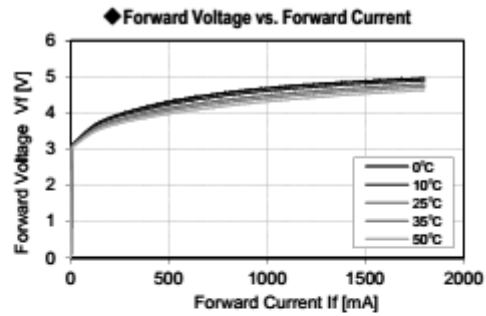
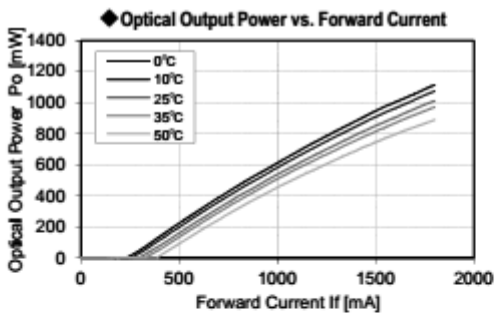
Operating Parameters	Symbol	Rating	Unit
Forward Current	$I_f$	1.8	A
Reverse Current	$I_{r(LD)}$	85	mA
Storage Temperature	$T_{stg}$	-40 to +85	°C
Operating Temperature (Case)	$T_c$	0 to +50	°C

### Optical and Electrical Characteristics:

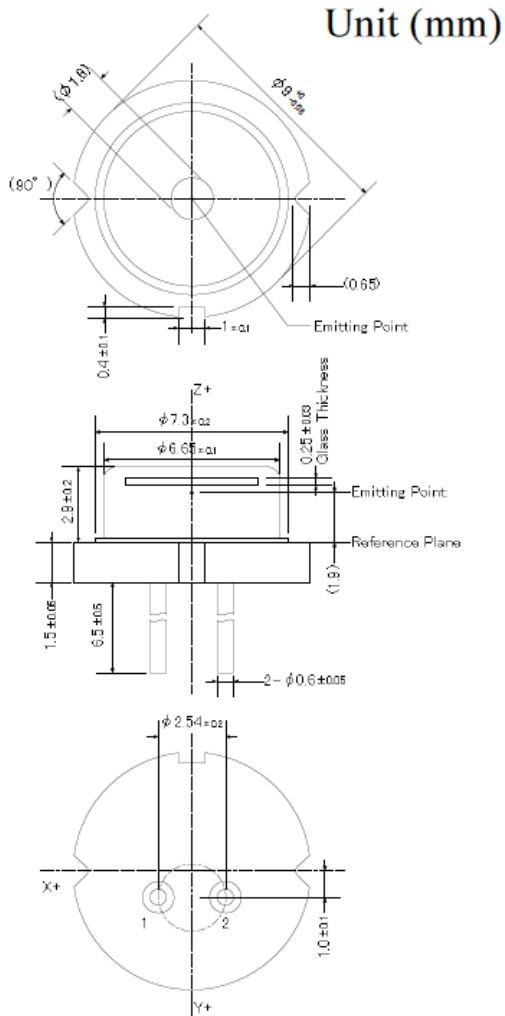
Operating Parameters	Symbol	Min	Typ	Max	Unit
Optical Output Power	$P_{out}$	-	1000	-	mW
Wavelength	$\lambda$	510	520	525	nm
Threshold Current	$I_{th}$	-	300	-	mA
Forward Voltage	$V_f$	-	4.6	-	V
Slope Efficiency	$\eta$	-	0.83	-	W/A
Beam Divergence Parallel*	$\Theta_{  }$	5	11	25	deg.
Beam Divergence Perpendicular*	$\Theta_{\perp}$	35	46	55	deg.
Beam Pointing Accuracy $\perp$	$\theta_{\perp}$	-	-	$\pm 5$	deg.

\* Full Width 1/e<sup>2</sup>

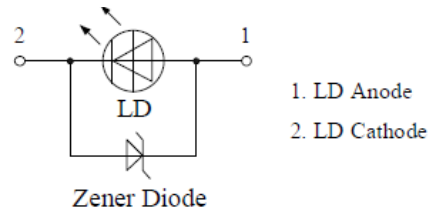
## TYPICAL PERFORMANCE



**PACKAGING**



Pin Connection



**This model does not have Photo Diode. This model has a Zener Diode built in as a protection circuit against static electricity.**

( ) are reference figures