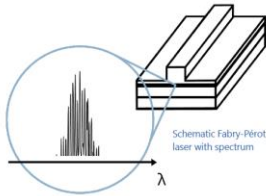


LASER DIODE FNPL-2145-1W-HPFP



FNPL-2145-1W-HPFP is a high-power CW Fabry-Pérot semiconductor laser diode available in a wavelength range between 1950nm to 2350nm. They are packaged on a submount with AlN carrier without TEC or NTC.

Key Features

- Broadband
- Many Custom Wavelength Possible
- High Power

Applications

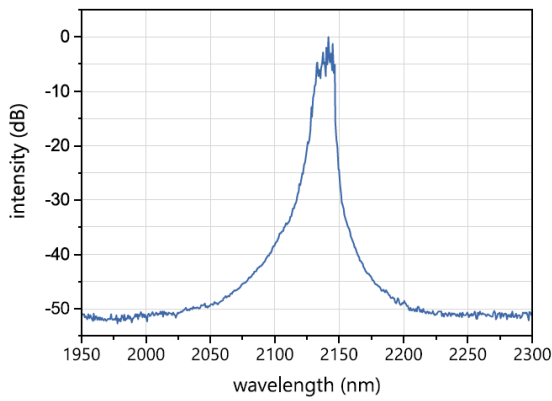
- High Performance Gas Sensing
- Sensing of Liquids
- Free Space Communications
- Spectroscopy

Optical and Electrical Characteristics

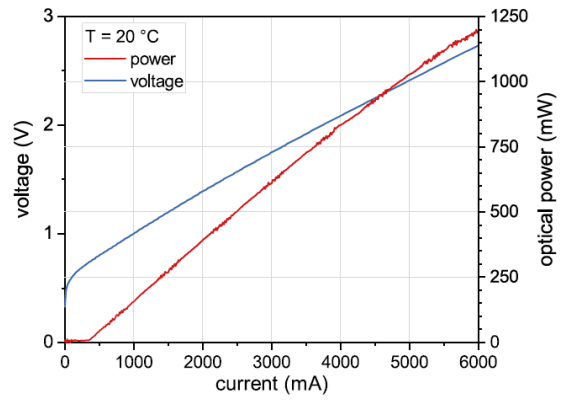
Operating parameters	Symbol	Min	Typ	Max	Unit
Lasing Wavelength	λ	-20	1950-2350*	+20	nm
Optical Output Power	P_{out}		1		W
Threshold Current	I_{th}		300		mA
Forward Current	I_f		5		A
Operating Voltage	V_{op}		2.5		V
Operating Chip Temperature	T_C	+15	+20	+40	°C
Storage Temperature**	T_S	-40	+20	+80	°C

* non-condensing

Typical Specifications

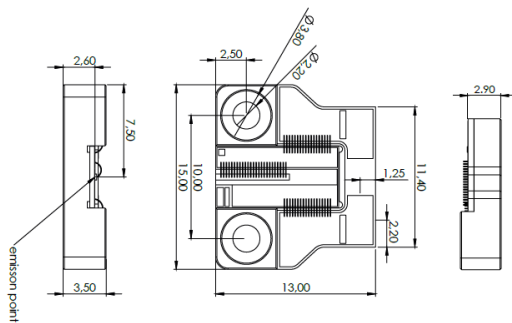


Typical room temperature cw spectrum of a HPPF laser at 2145 nm



Typical PI and VI curve of a HPPF laser at 2145 nm

Laser Packaging



Technical drawing of submount with AlN carrier

