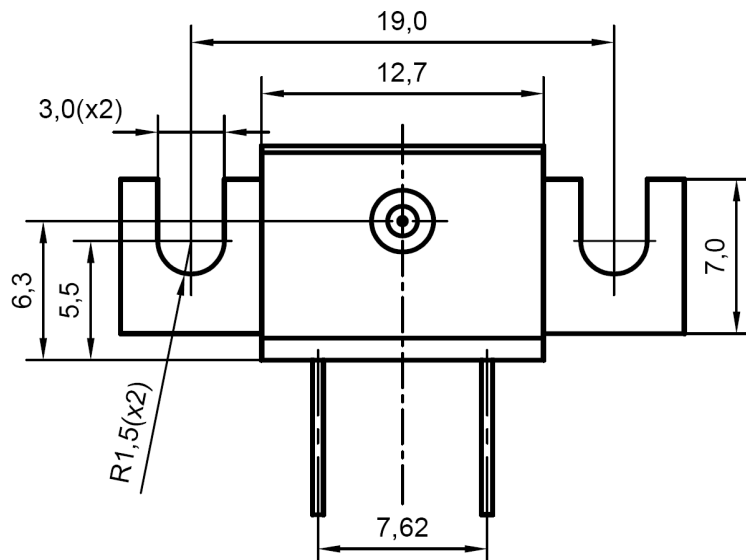
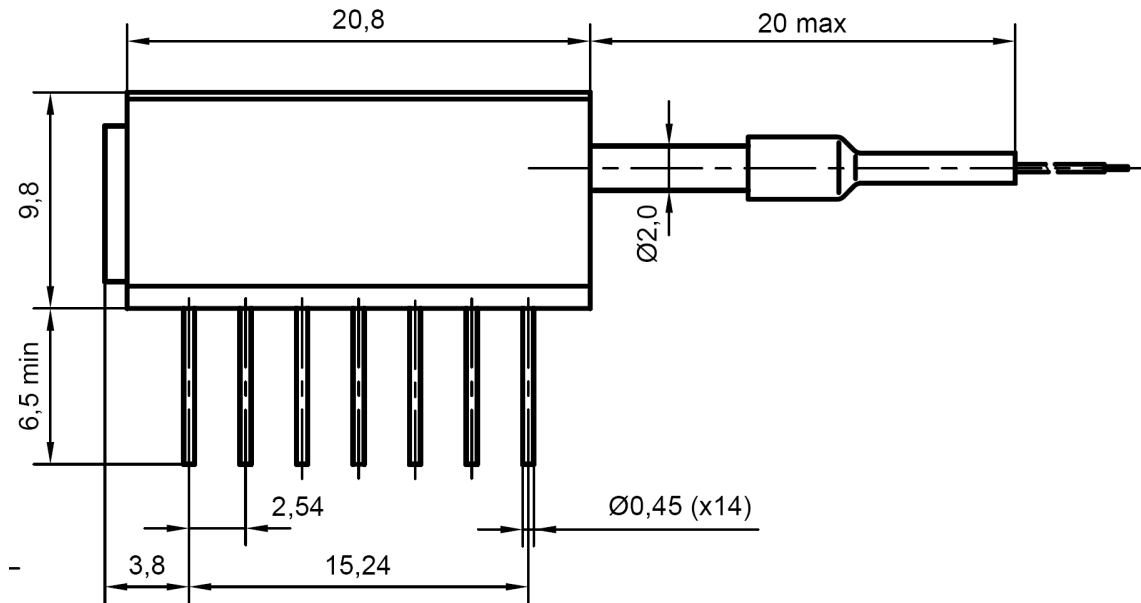
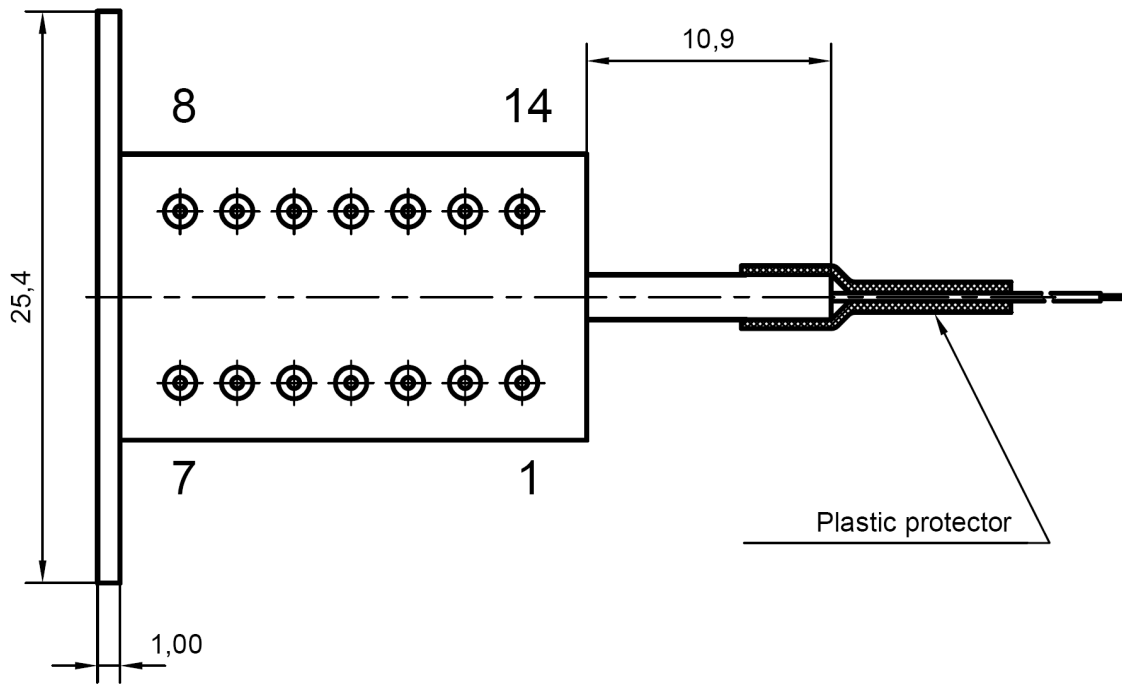


Package FSLD-DIL14

Drawing (all dimensions in mm)





Electrical connections

- | | |
|--------------------------|---------------------------|
| 1: TEC (+) | 8: PD anode (-) |
| 2: N/C | 9: SLD cathode (-) |
| 3: N/C | 10: Case |
| 4: N/C | 11: Thermistor |
| 5: SLD anode (+) | 12: Thermistor |
| 6: N/C | 13: N/C |
| 7: PD cathode (+) | 14: TEC (-) |

- | | |
|--|---|
| 1. All dimensions in mm | 3. Package final plating: Au - 1.27 - 3.81 μm |
| 2. Tolerances: .x \pm 0,2 mm | 4. Lid material (without plating): Ni |
| xx \pm 0,10 mm | 5. Fiber length - 650...1000 mm |