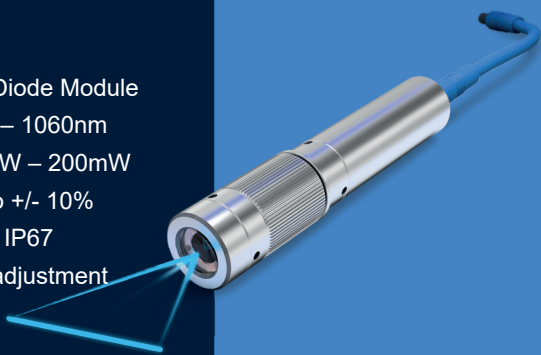




Line Laser Modules for Machine Vision and Laser Triangulation

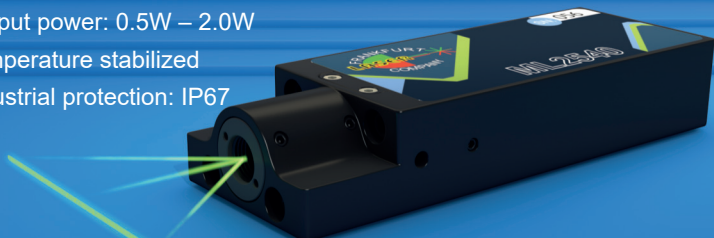
HAML-F

Uniform Line Laser Diode Module
Wavelength: 405nm – 1060nm
Output power: 100mW – 200mW
Line uniformity: up to +/- 10%
Industrial protection: IP67
Easy manual focus adjustment



ML2540

High Power Line Laser Modules
Wavelength: 405nm – 1060nm
Output power: 0.5W – 2.0W
Temperature stabilized
Industrial protection: IP67



Market smallest footprint: 130mm x 40mm x 25mm

HSML-E

Ultra-thin Uniform Line Laser Diode Module
Wavelength: 405nm – 1060nm
Output power: up to 50mW
Line width: 10 μ m
Line uniformity: up to +/- 10%
Industrial protection: IP67
Separate electronic driver to use in limited space devices



See technical details on
frlaserco.com

See us at

VISION

Hall 1

Booth 10E90

Oct 05 – 07, 2021
Stuttgart, Germany